

# ESN Twente Info lunch

[April 21, 2010]

**KATHI, FRANZI, THEO, WING, KATRIN AND ANKE**



**ARE LOOKING FOR  
NEW BOARD MEMBERS**

# What is ESN

- \* The Erasmus Student Network is an international student organization
- \* Over 12.000 members from almost 347 local sections in more than 33 countries
- \* We welcome international students in Enschede with help of our mentors
- \* We organize activities for students to get to know each other, the Dutch way of life and of course the Netherlands

# What does ESN Twente do

- \* Organize numerous social, cultural, sportive events for the international community in Enschede throughout the year
- \* Organize 2 introductions (August and February)
- \* Work together with the International Office of the UT
- \* Participate in national and international meetings with all Dutch and European ESN sections

# Some event examples



# Some event examples



# Some event examples



# Some event examples



# Some event examples



# Besides organising we...

- \* Write a policy plan at the start of the year
  - Plans
  - Goals
  - Functions
- \* Write intermediate report halfway the year
  - Accomplishments so far
- \* Write reports for International Office
  - Financial report and proposed budget
  - Activity report and proposed activities
- \* Present ESN at different occasions
  - ESN events (ESN Twente, ESN-NL, ESN International)
  - International events in/around Enschede
  - UT events

# President

- ✱ Representation and face of ESN Twente
- ✱ Managing and monitoring ESN Twente foundation
- ✱ Keeping overview of all board tasks and goals
- ✱ Preparing and chairing board meetings
- ✱ Attend national and international meetings



# Secretary & Vice-president

- \* Close cooperation with the president
- \* Taking care of incoming messages
- \* Secretary tasks like office supplies, birthday cards
- \* Writing the minutes/protocol of meetings
- \* Taking care of international "administrative" tasks



# Treasurer

- \* Make a budget plan to request subsidies
- \* Managing ESN Twente's money in the booking system
- \* Deciding about expenditures and transferring money
- \* Finding and contacting sponsors for the ESNCard
- \* Have meetings with the cash control committee



# Reception & Mentor Coordinator

- ✿ Contact person for all arriving international students
- ✿ Responsible for ESN activities during introductions
- ✿ Find and coordinate mentors that help ESN Twente
- ✿ Make sure all new students are guided at arrival
- ✿ Meet with International Office and Kick-In committee



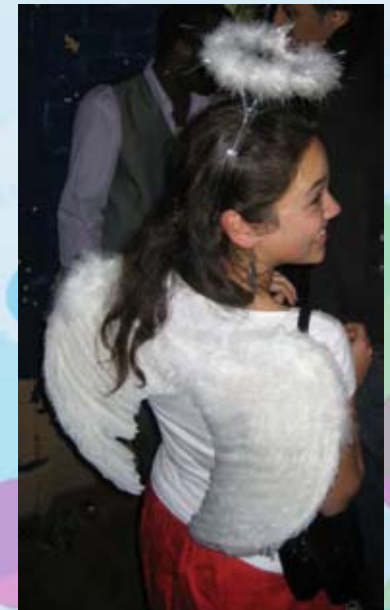
# Activity Coordinator

- \* Organize activities (sports, cultural, social)
- \* Keep contact with associations we collaborate with
- \* Write an activity plan for coming year
- \* Write evaluation of activities of the previous year
- \* Contact person for students who subscribed to or help with an activity/event



# PR Coordinator

- \* Writing promotional text for ESN Twente
- \* Promoting our events
  - Weekly newsletter
  - Monthly posters
  - Occasional flyers
  - 4-6x a year magazine
  - Website
- \* Coordinate the PR committee
- \* Distribute the promotion material
- \* Updating and maintaining the website



## ESN Board together

- \* Weekly board meetings
- \* Office hours during lunch breaks on weekdays
- \* Attend our own events
- \* Be present during introductions (August, February)
  - August 18 - 26, 2010
- \* Attend meetings and constitution drinks
- \* Help out the other board members

# Why join the ESN board

- ✱ Be part of the ESN family
- ✱ Experience our international community
- ✱ Gain knowledge, organizational and language skills
- ✱ Get to know many different people and cultures
- ✱ Help international students in Enschede
- ✱ Be a tourist in the Netherlands



INTERNATIONAL EXCHANGE  
ERASMUS STUDENT NETWORK

# TIME FOR QUESTIONS

[WWW.ESNTWENTE.NL](http://WWW.ESNTWENTE.NL)

# Interested?

- \* Apply for a board function for 2010-2011!
- \* Send a motivational letter + CV to us via [info@esntwente.nl](mailto:info@esntwente.nl)
- \* Write why you want to join, your experiences and your function preference (max. 1 A4)
- \* Do this before Wednesday May 5, 2010!

# Contact us

- \* Come by our office (Bastille, 319) anytime! We are there every lunch break (12.35-13.35)
- \* Send us an email
  - general: [info@esntwente.nl](mailto:info@esntwente.nl)
    - [president@esntwente.nl](mailto:president@esntwente.nl)
    - [secretary@esntwente.nl](mailto:secretary@esntwente.nl)
    - [treasurer@esntwente.nl](mailto:treasurer@esntwente.nl)
    - [reception@esntwente.nl](mailto:reception@esntwente.nl)
    - [activity@esntwente.nl](mailto:activity@esntwente.nl)
    - [pr@esntwente.nl](mailto:pr@esntwente.nl)
- \* Come to our events! Every Tuesday from 22.30 we host the ESN Weekly Drink in the Vestingbar



INTERNATIONAL EXCHANGE  
ERASMUS STUDENT NETWORK

THANK YOU FOR  
**ATTENTION**

[WWW.ESNTWENTE.NL](http://WWW.ESNTWENTE.NL)